

**SPOTLIGHT**

**ART  
SMOCK**

Nº 17.22.24  
PROJECT SHEET



*It's what you make it.*

**SHOW US WHAT  
YOU'RE MAKING**

 /spotlightstores

 @spotlightstores

## ART SMOCK

**i** EASY

### WHAT YOU'LL NEED

- 112 cm printed poplin x 1.3m (body)
- 112cm plain broadcloth x .6m (sleeves)
- 6mm woven elastic x 1m
- Bias Binding x .7m
- Gutermann sewing thread
- Sewing machine
- Scissors
- Pins
- Safety pin
- Iron
- Ruler/tape measure

### INSTRUCTIONS

All seam allowances are 1.5cm unless specified.

**Step 1** - From the templates provided, cut out the following:

- Printed poplin - front on fold x1 and back on fold x1
- Plain Broadcloth - sleeves x2

Overlock all raw edges of all cut pieces of fabric.

**Step 2** - With right sides facing, pin the armhole edges of the sleeves to the front and back body pieces. Sew together, press open.

**Step 3**- With right sides facing, pin front and back together along the sides and underarm seams. Sew together, press open.

**Step 4** - To make the elastic casing on the sleeves, press under 1.5cm on both the ends of the sleeves and sew in place 10mm from the pressed edge, leaving a 4cm opening at underarm seam. Cut a piece of elastic to fit wrist and add 1cm. With the help of a safety pin, thread elastic through casing and overlap ends by 1cm. Sew overlap securely in place. Sew casing opening closed.

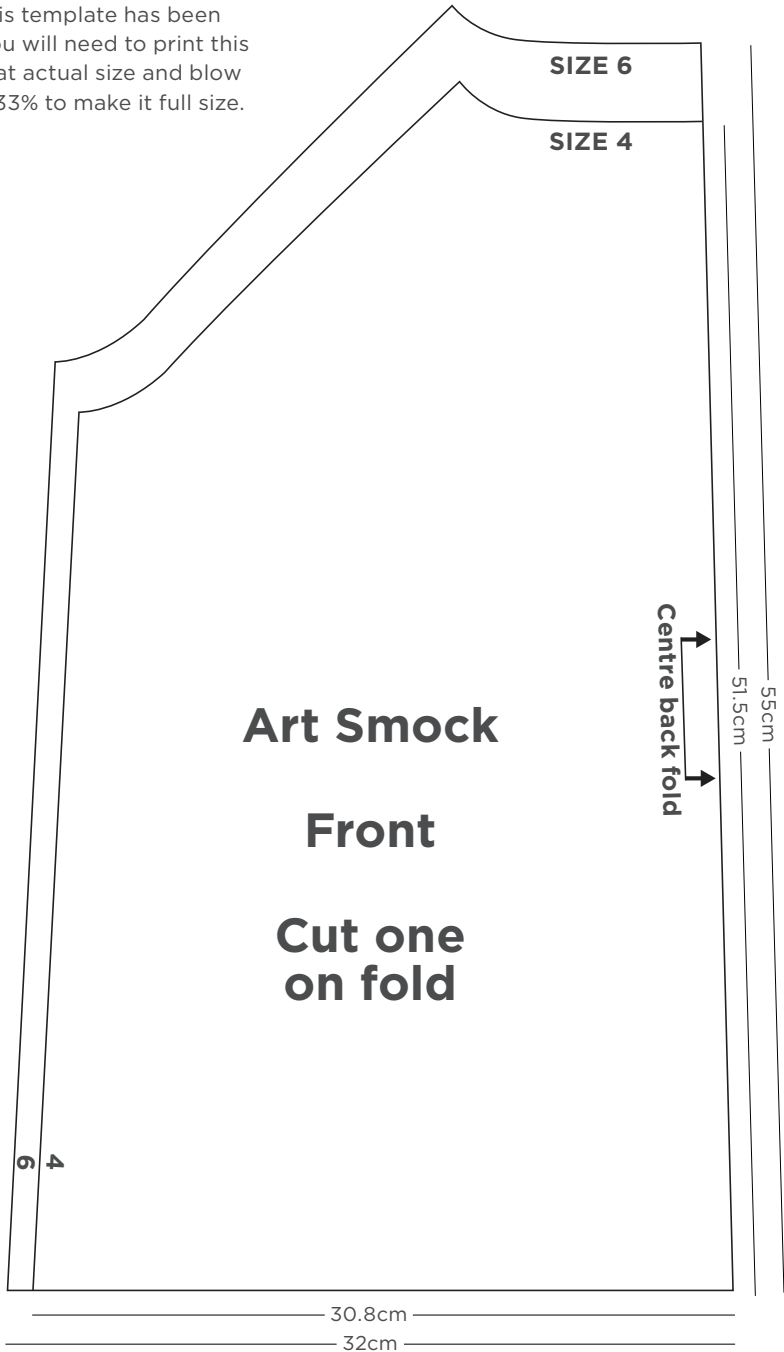
**Step 5**- Cut a piece of bias binding to fit the neckline plus 2cm. Open up ends of bias and with right sides facing pin and sew ends together with a 1cm seam allowance. Open one side of bias tape loop open.

**Step 6** - With right sides facing, pin the open edge of bias tape to neckline edge. Sew together along the crease of the bias tape. Trim and clip seam. Press seam and bias away from smock and fold bias over to the wrong side of the neckline. Press and pin in place. Sew bias to neckline close to pressed over edge, leaving a 4cm opening.

**Step 7** - Cut a piece of elastic to fit over and comfortably around base of neck of child and add 1cm. With the help of a safety pin, thread elastic through bias casing and overlap ends by 1cm. Sew overlap securely in place. Sew bias casing opening closed.

**Step 8**-Press under 1.5cm along the open base of smock and pin hem in place. Sew hem by top stitching 1cm from pressed edge.

**Note** - This template has been scaled. You will need to print this template at actual size and blow it up by 333% to make it full size.



54.5cm

49.7cm

# Art Smock Sleeve Cut 2

SIZE 4

SIZE 6

32.5cm

37cm

34.1cm

34.7cm

